

Architectural section drawing of a room. The drawing shows a wall with a red textured panel on the left, a grey rectangular feature, a white door, and a black bench. The drawing includes dimensions and material specifications.

Dimensions:

- 12.850 aut. podw.
- 12.350 aut. podw.
- /+ 0.00

Material specifications:

- TAPETA OBIEKTOWA NP-1ny
- 180x140cm
- KOLOR: Miodowy, kolor 10850
- Klamka z klamki, gr. 2 cm
- Kolor: Biel
- np. Cieszanów 2141 Snow

[illegible]

Technical drawing of a window frame assembly. The drawing shows a cross-section of the frame with various dimensions and components labeled.

Dimensions (mm):

- 135 (Total height of the frame assembly)
- 115 (Height of the frame body)
- 115 (Height of the frame body, repeated)
- 60 (Thickness of the frame body)
- 53 (Thickness of the frame body, repeated)
- 72 (Height of the frame body, repeated)

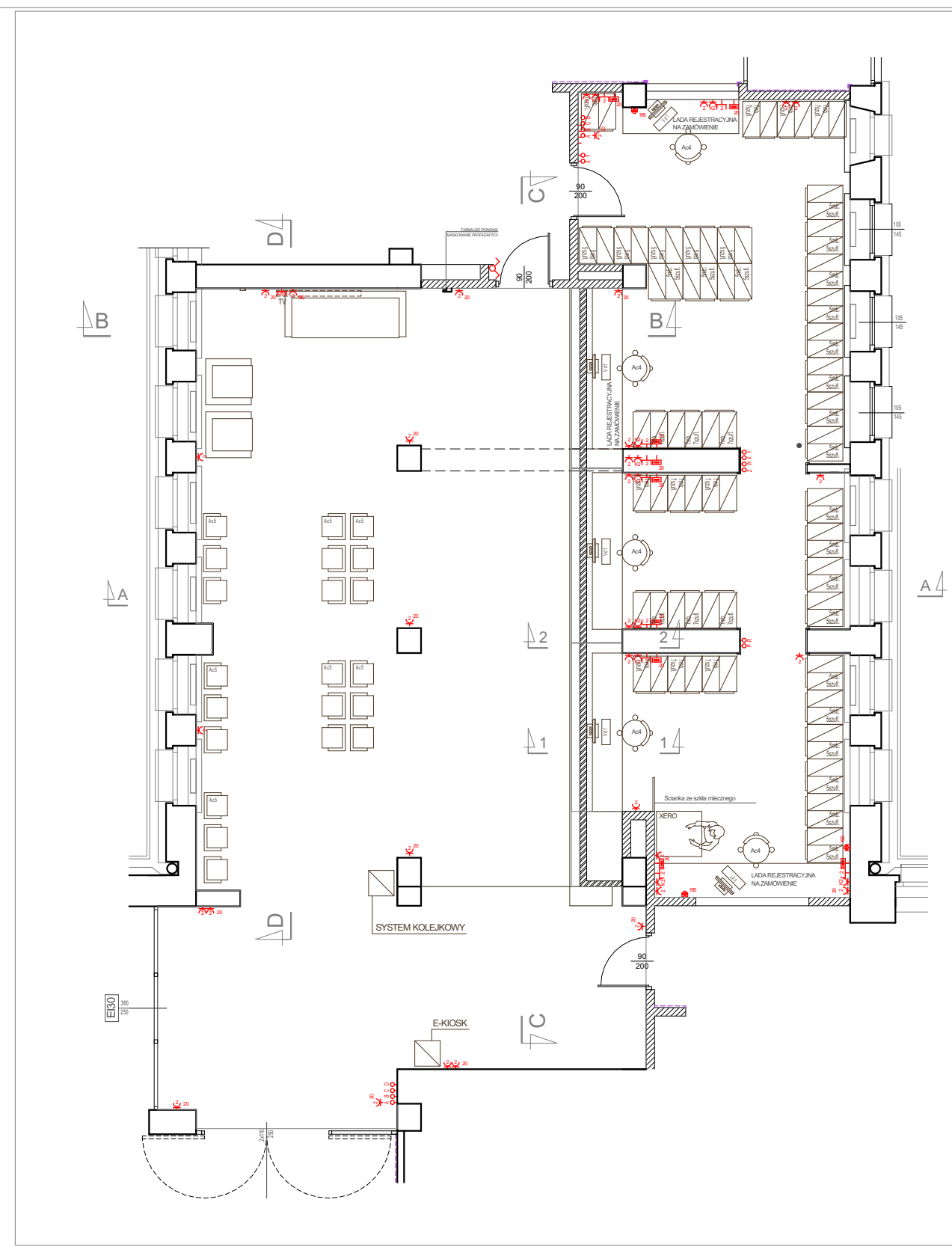
Components and Notes:

- blat z kamienia, gr. 2 cm (slab from stone, 2 cm thick)
- spiek insynowy, kolor brązy np. vanilla noc Caseston (synthetic slate, bronze color e.g. vanilla night Caseston)
- Dolny podłot - płyta HPL, kolorowo ustawiama w trakcie nadzoru (Bottom support - HPL plate, color adjustable during supervision)

TAPEETA OBIEKTOWANP - 1mty
MURASPEC
KOLORY LUBO, kolor 11400

TAPEETA OBIEKTOWANP - 1mty
MURKEX KLASIK, kolor 10850

Technical drawing of a window frame cross-section. The drawing shows a vertical frame with a horizontal sill. Dimensions are indicated on the left: 250 (total height), 115 (height to the top of the frame), 20 (height of the top frame part), 10 (height of the top frame part), 41.4 (height of the frame part), and 70 (height of the sill). A red line indicates the position of the window pane. A red symbol (a circle with a cross) is shown on the right side of the frame, indicating the location of the window handle or latch.



INWESTOR	SZPZLO - Warszawa Ochota ul. Szczęśliwica 36, 02-353 Warszawa				
TEMAT					
ADRES					
STADIUM	PROJEKT WYKONAWCZY				
BRANŻA	ARCHITEKTURA I TECHNOLOGIA				
ZAKRES	PROJEKT WNĘTRZ - POMIESZCZENIE 04, 05 -				
PROJEKTANT	arch. Roman popielawski www.architekturanet.pl	NR UPRAW. Ma/08/09	PODPIS 10.02.2020	DATA 10.02.2020	SKALA 1:50
				TOM I	NR RYS.: 08
SPRAWDZIŁ					